

Installing on Windows

Minimum System Requirements

The following operating systems are supported for this release. RenderMan may operate outside of this requirement, but it may be unstable and is not supported:

- Microsoft Windows 8 or *newer* 64-bit

RenderMan is designed to efficiently scale across many CPU cores, so while the above is a minimum requirement, systems with multiple processors will see the best performance.

Pixar's RenderMan software is delivered as:

- RenderMan-Installer-*version*-windows *flavor*_vc11icc150.x86_64.msi - The RenderMan rendering toolkit.

The *flavor* string includes the common distribution, e.g. windows8, the *gcc/icc* versions, and the microprocessor instruction set, e.g. i686. Putting them all together provides, for example, an Windows 8 package named RenderMan-Installer-22.0-windows8_vc11icc150.x86_64.msi

The following additional requirements must be met:

- All: CPU capable of running the full SSE4 instruction set.
- Maya: Compatible with 2018.3+ & 2017.3+
- Katana: Compatible with 2.6.4 & 3.0

GUI-based Installation

To install the software, simply double-click on the appropriate MSI file, and click through the various dialogues. The default values are appropriate in most cases.

During the installation process, you will first be given a chance to select a root directory. By default, this directory is C:\ProgramFiles\Pixar\ This will become the root directory for all of the software components listed above. The installer also generates a log file in the download directory with a name formatted as: rmaninstaller.XXXX.txt This file may be referenced later if there are installation issues.



END USER LICENSE AGREEMENT

This Agreement sets forth Pixar's Standard Terms & Conditions for obtaining a license to use the Pixar software ("Pixar Software"). This Agreement does not become binding until the end user ("End User") submits a valid purchase order which Pixar shall have the option of accepting or rejecting, in its sole discretion. In return for acquiring a license to use the Pixar Software and the accompanying documentation, End

- I accept the terms in the License Agreement
- I do not accept the terms in the License Agreement

Select the folder to install the application into.

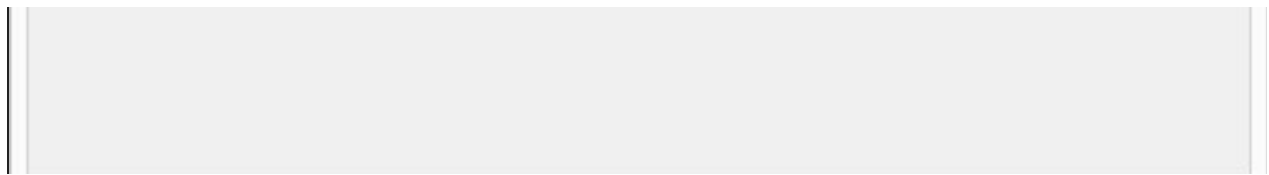
The Pixar Installer will install the files for RenderMan-Installer in the following folder. To install into a different folder, click the Browse button and select another folder. You can choose not to install RenderMan-Installer by clicking Cancel.

Location: C:\Program Files\Pixar\

Browse

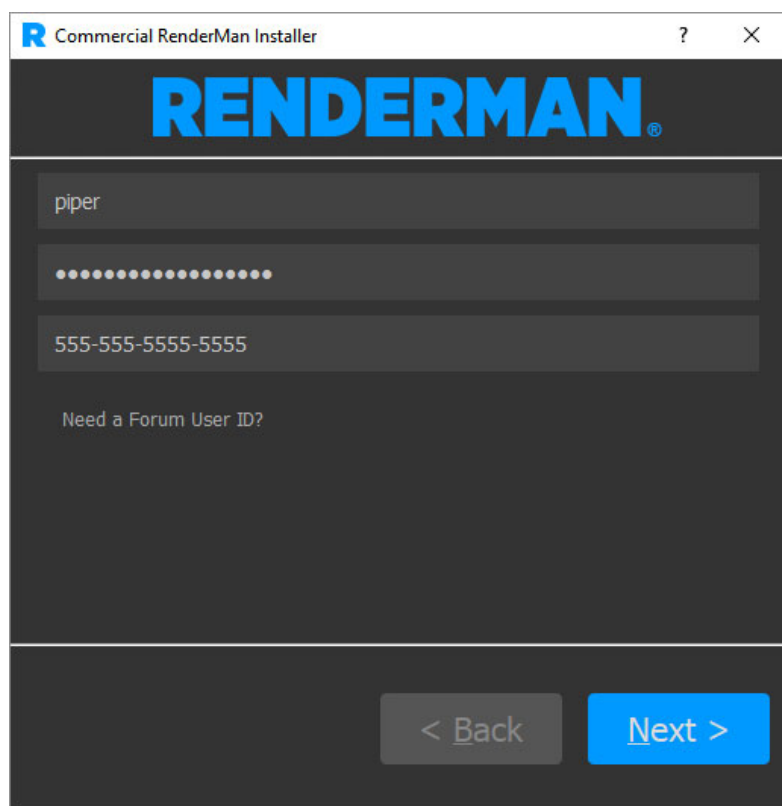
The Setup Wizard is ready to begin the Typical installation.

Click Install to begin the installation. If you want to review or change any of your installation settings, click Back. Click Cancel to exit the wizard.

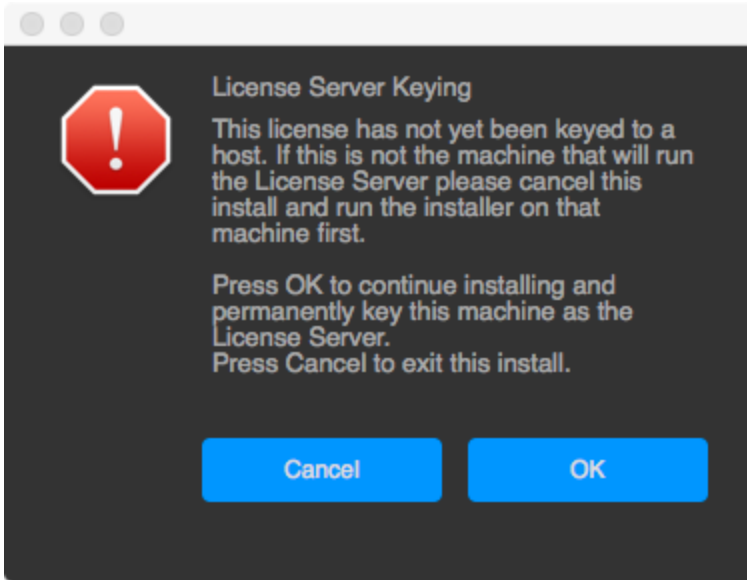


The installer will connect with the RenderMan Pixar Server and download your licensed components. During the installation process you will see that the default location for installation is /opt/pixar This will become the root directory for all of the software components listed above.

We'll no go step by step through the process. First you must login with your forum account and provide the serial number for the license you have purchased.



Next you may see the following if you are installing on a floating license server for the **FIRST** time:



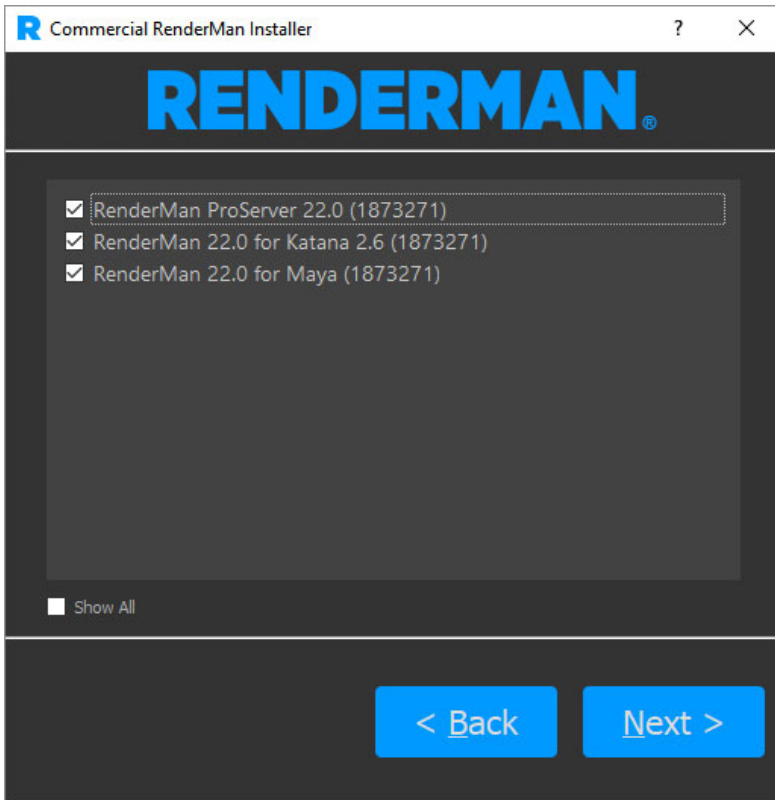
This is telling you that the installer is about to key your license server to the host you are running the installer on.

If this is **NOT** the machine you want to run your license server on, press the **Cancel** button and re-run the installer on the machine you want to designate as the license server.

If you decide to make this machine your license server or you are installing a node-locked license, the installer will then contact Pixar and retrieve your license file. It will place this license file by default in:

- Windows: C:\Program Files\Pixar\pixar.license
- macOS: /Applications/Pixar/pixar.license
- Linux: /opt/pixar/pixar.license

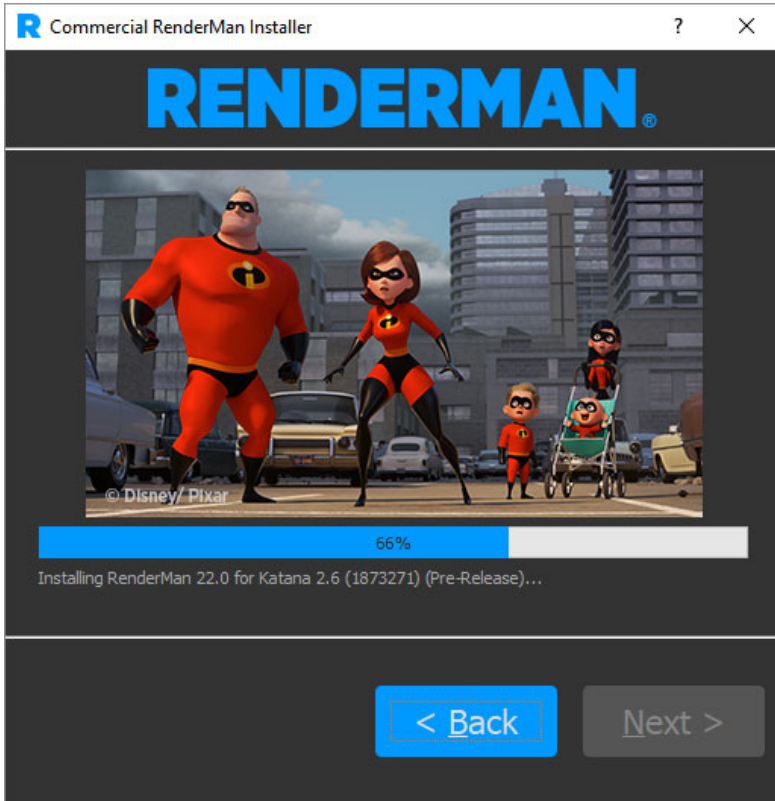
Next you will see a list of packages you wish to install.



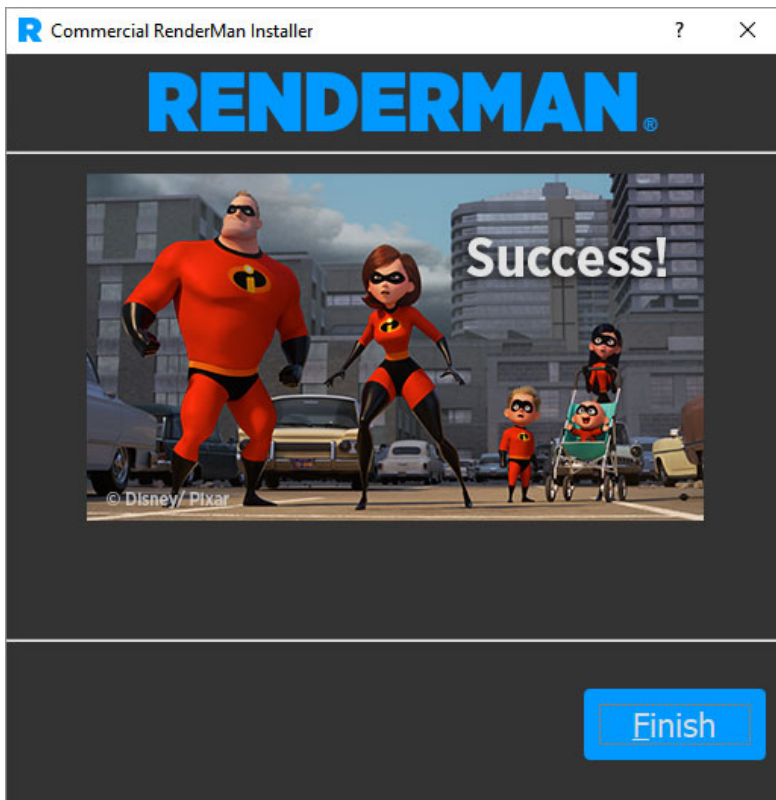
The installer will try to find the appropriate plugins to install as well. However if it cannot find a Maya installation or determines you have already installed the latest version of the software, you will give you a warning that something strange is afoot.

Here you can now decide which software and packages you wish to install. For instance if you do not wish to install the Katana plugins, you can deselect those. If you **WOULD** like to instal the license server for a floating license installation, you may select the "Show All" button and select the license server package as well. **Installing The License Server** talks in detail about the steps that must be taken on each platform once the installation finishes to ensure that the floating license server is functioning correctly.

Once the desired packages are selected, hitting the **Next** button goes to the download and installation phase.



Once this phase is complete a **Success!** screen should appear. At this point you can exit the installer.



When the installer is finished, the floating license service should have been STARTED.

Windows License Server goes over all the details for configuring and starting the floating license services if it was not started.

Downloads

Other types of files besides RenderMan, the License Server and the DCC plugins can be downloaded with the installer as well. These include the RenderMan Examples. These will be placed in the user who ran the RenderManInstaller Download directory.

Python

If you plan to take advantage of the Python binding you will need to download Python installer from www.python.org. RenderMan Pro Server 22 binding is compatible with 2.7, 3.4, or 3.5.

Help

If you require further assistance, please check out the [RenderMan Support Forum](#). Note that registration is required.