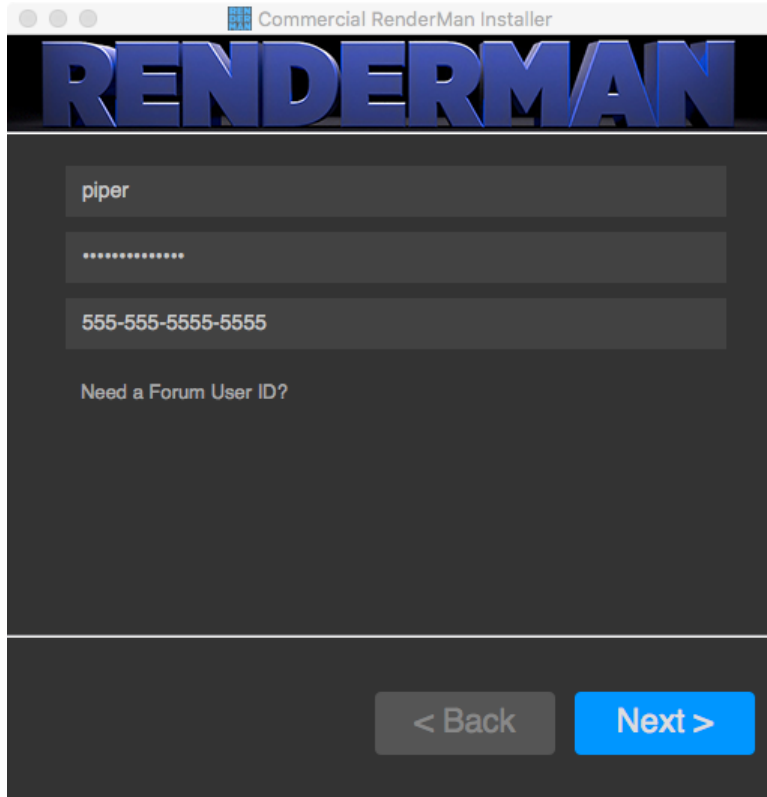


Installing The License Server

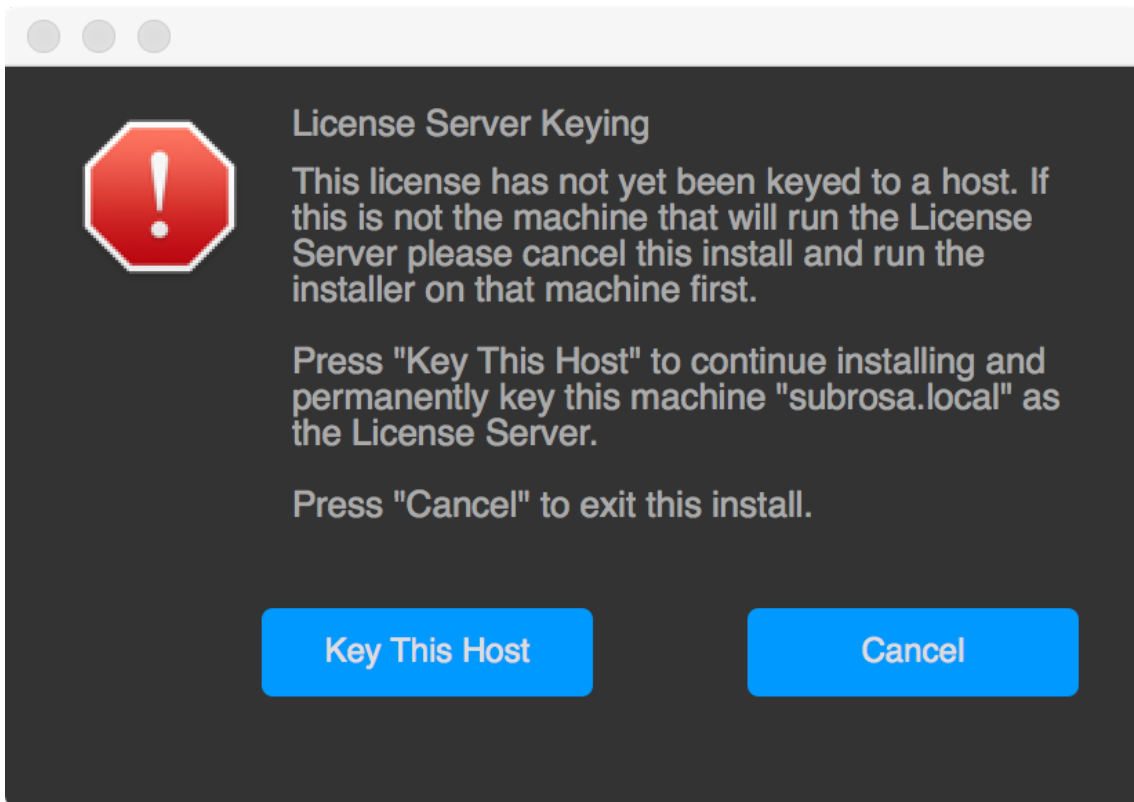
The Pixar License Server can be downloaded and installed in the RenderMan Installer along with RenderMan Pro Server and RenderMan for Maya. Alternatively the individual installer for the License Server can be download from the Support section of the renderman.pixar.com website and run by hand.

To install the license server from the integrated installer package, first login with your forum name and password and provide the serial number for the floating licenses that you have purchased.



The image shows a screenshot of the 'Commercial RenderMan Installer' window. At the top, the title bar reads 'Commercial RenderMan Installer'. Below the title bar is a large, stylized blue 'RENDERMAN' logo. The main area of the window is dark gray and contains three input fields. The first field contains the text 'piper'. The second field contains a series of dots, representing a password. The third field contains the text '555-555-5555-5555'. Below these fields is the text 'Need a Forum User ID?'. At the bottom of the window, there are two buttons: a gray button with the text '< Back' and a blue button with the text 'Next >'.

Once you have logged in, if you have NEVER setup a license server on the machine you are running the installer on; the installer will give you a warning.



This is telling you that the installer is about to key your license server to the host you are running the installer on.



If this is **NOT** the machine you want to run your license server on, press the **Cancel** button and re-run the installer on the machine you want to designate as the license server.

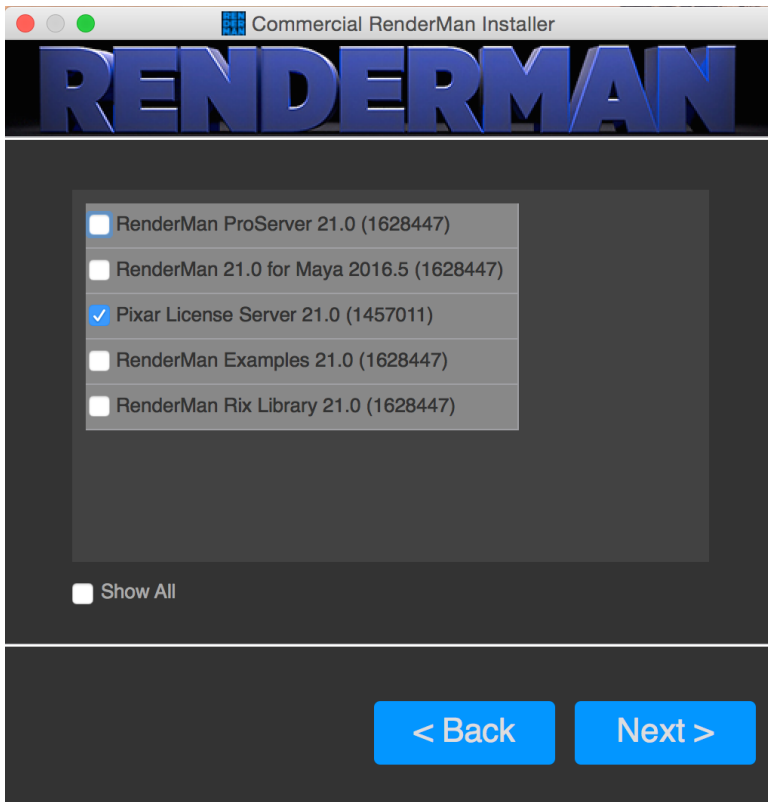
If you decide to make this machine your license server, the installer will then contact Pixar and retrieve your license file. It will place this license file by default in:

- Windows: C:\Program Files\Pixar\pixar.license
- macOS: /Applications/Pixar/pixar.license
- Linux: /opt/pixar/pixar.license



NOTE: On macOS and Windows, the operating system may ask for an administrator password. On Linux the installer must be run as sudo or root user.

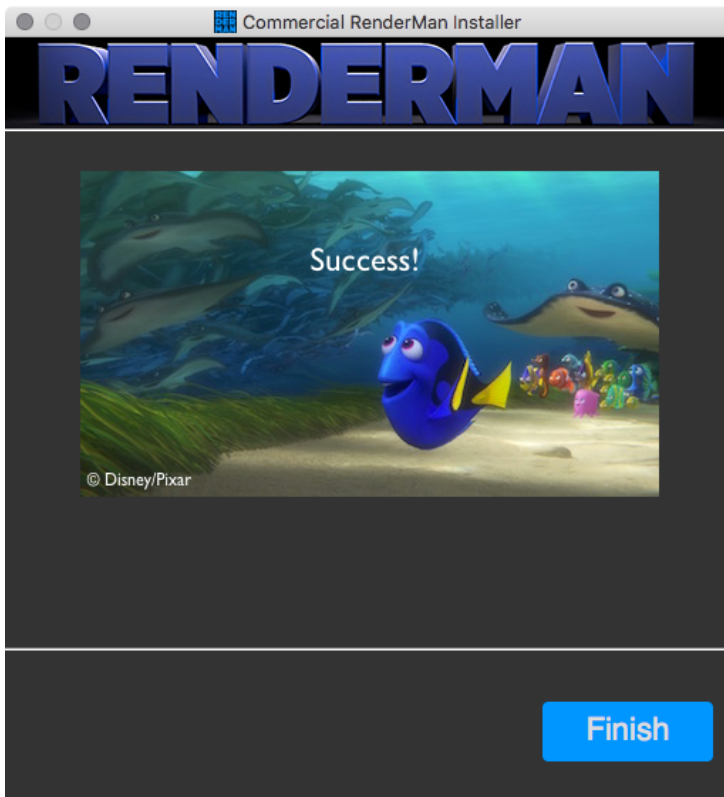
The installer will then proceed to give you a list of available packages to download.



Since we are only interested in installing the license server, we will **uncheck** all other packages the installer may have automatically selected for us. NOTE: You may have to select the "**Show All**" checkbox to list the Pixar License Server package. Then we select only:

Pixar License Server 21.0 (XXXXXXX)

When we hit the "Next" button it will proceed to download the license server package and when has downloaded and installed it, you should see this:



Now there are some operating system specific configuration steps and choices to be made to get the Pixar License Server running after the installer is finished. For an explanation of the configurations click on a section below for the operating system the License Server has been installed on:

[Linux](#)

[MacOS](#)

[Windows](#)