

# Installing on macOS

## Minimum System Requirements

The following operating systems are supported for this release. RenderMan may operate outside of this requirement, but it may be unstable and is not supported:

- macOS 12.x Monterey
- macOS 13.x Ventura

Pixar's RenderMan software is delivered as:

- `RenderMan-Installer-version-osxflavor.dmg` - The RenderMan rendering toolkit.

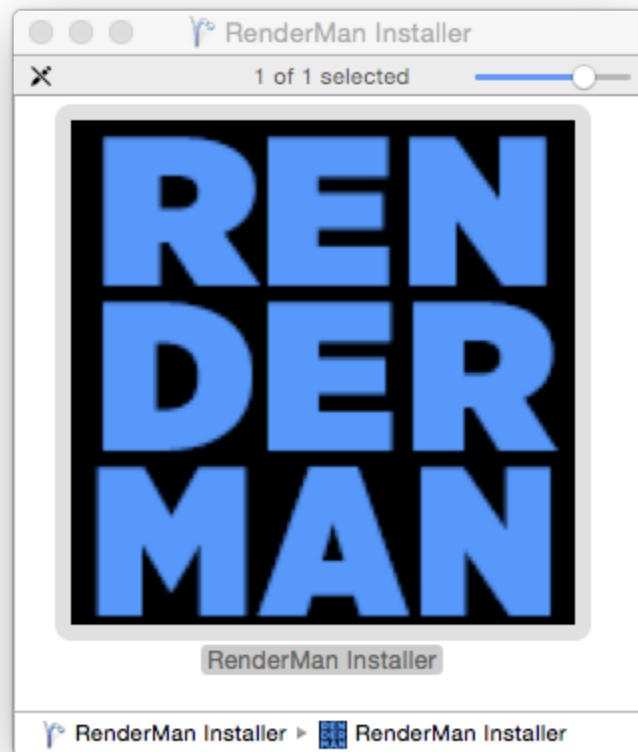
The *flavor* string includes the common distribution, e.g. Monterey, the clang/icc versions, and the microprocessor instruction set, e.g. i686. Putting them all together provides, for example, a macOS Monterey package named `RenderMan-Installer-25.2.0_2282810-osxMonterey_clang14.x86_64.dmg`.

The following additional requirements must be met:

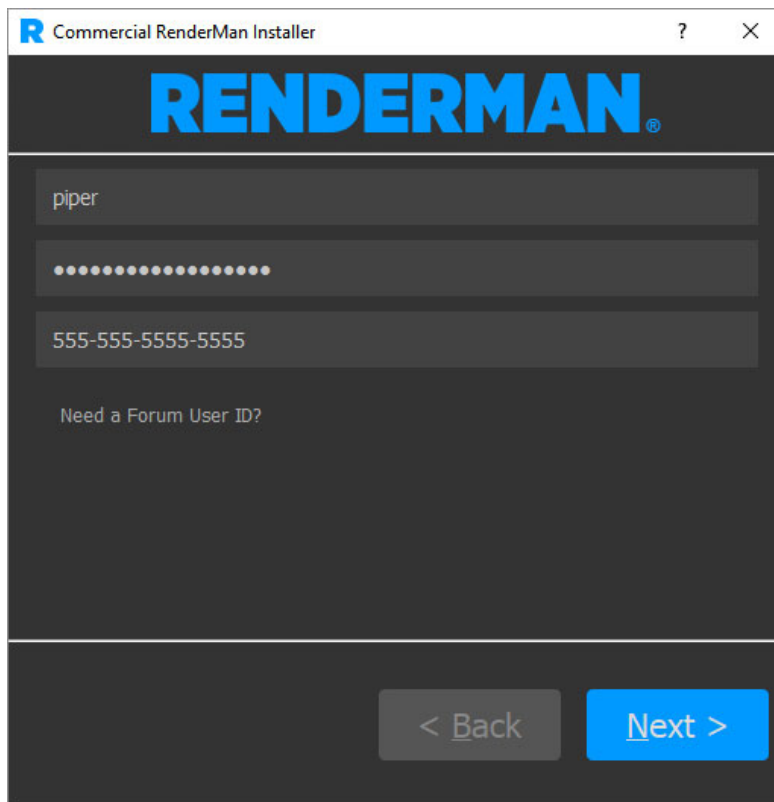
- All: Intel CPU capable of running the full AVX instruction set.
- Maya: 2020, 2022, 2023
- Houdini: 18.5, 19.0, 19.5
- Blender: 2.83, 2.93 LTS

## GUI-based Installation

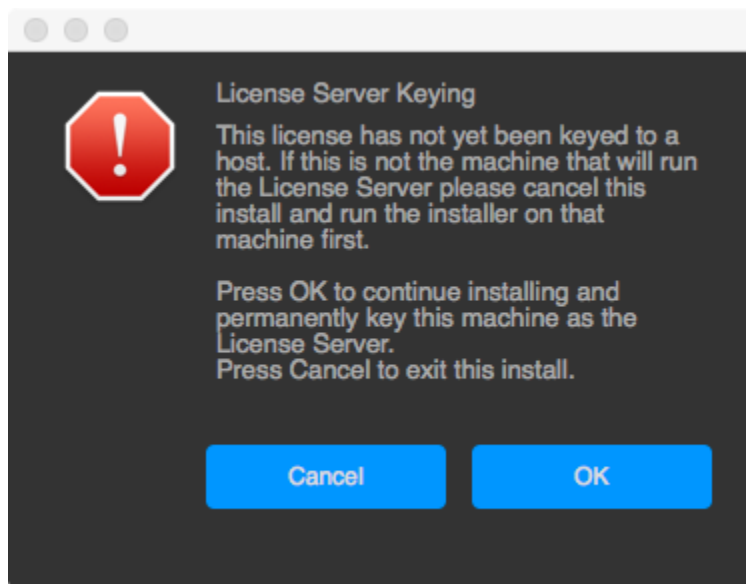
To install the software, simply double-click on the appropriate DMG file that was downloaded.



We'll now go step by step through the process. First you must login with your forum account and provide the serial number for the license you have purchased.



Next you may see the following if you are installing on a floating license server for the **FIRST** time:



This is telling you that the installer is about to key your license server to the host you are running the installer on.



If this is **NOT** the machine you want to run your license server on, press the **Cancel** button and re-run the installer on the machine you want to designate as the license server.

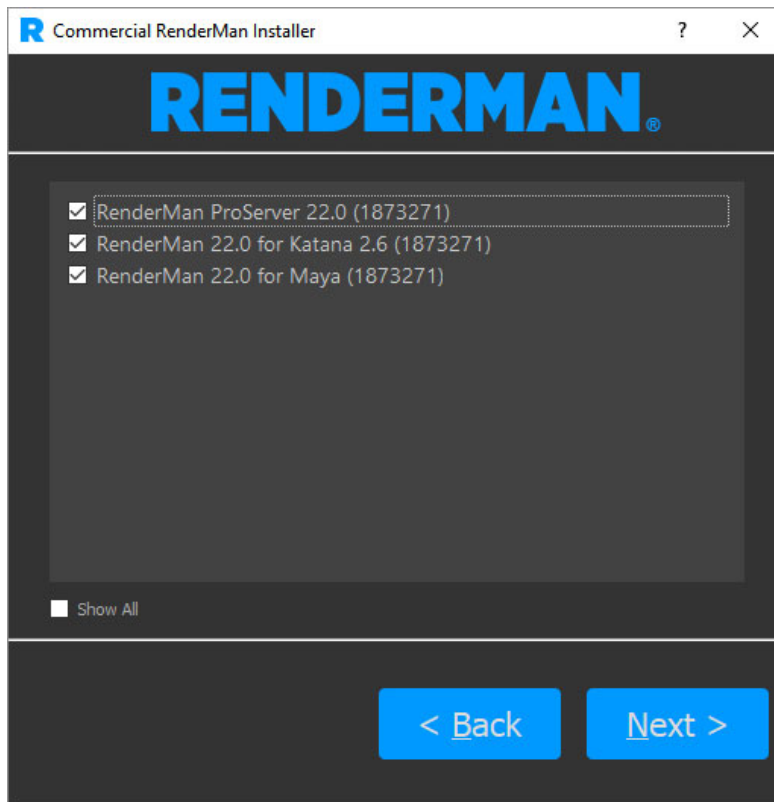


During installation, you will see the RenderMan 24 License Server instead of the RenderMan 25 License Server. This is expected.

If you decide to make this machine your license server or you are installing a node-locked license, the installer will then contact Pixar and retrieve your license file. It will place this license file by default in:

- Windows: C:\Program Files\Pixar\pixar.license
- macOS: /Applications/Pixar/pixar.license
- Linux: /opt/pixar/pixar.license

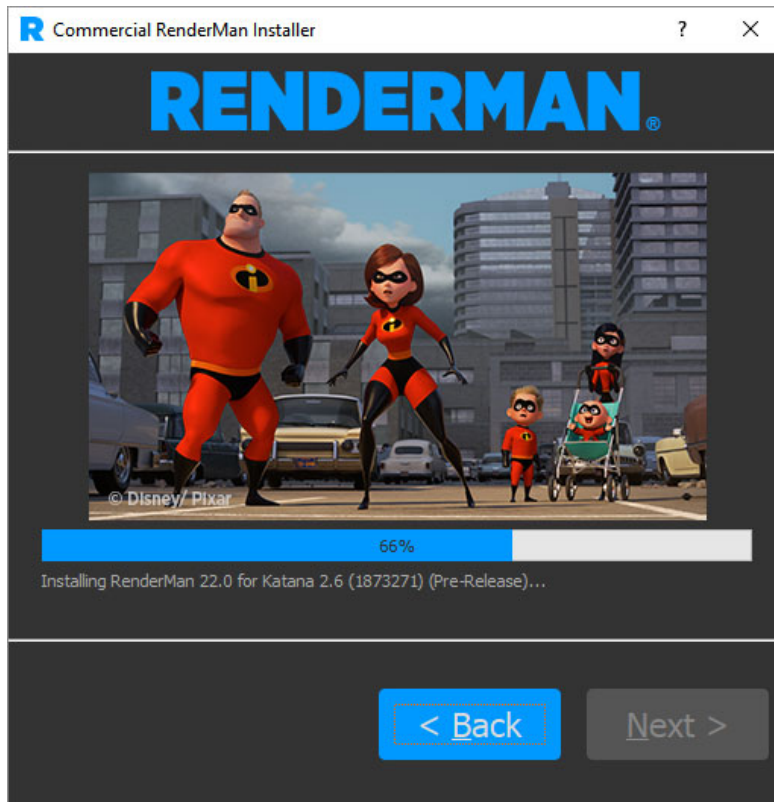
Next you will see a list of packages you wish to install.



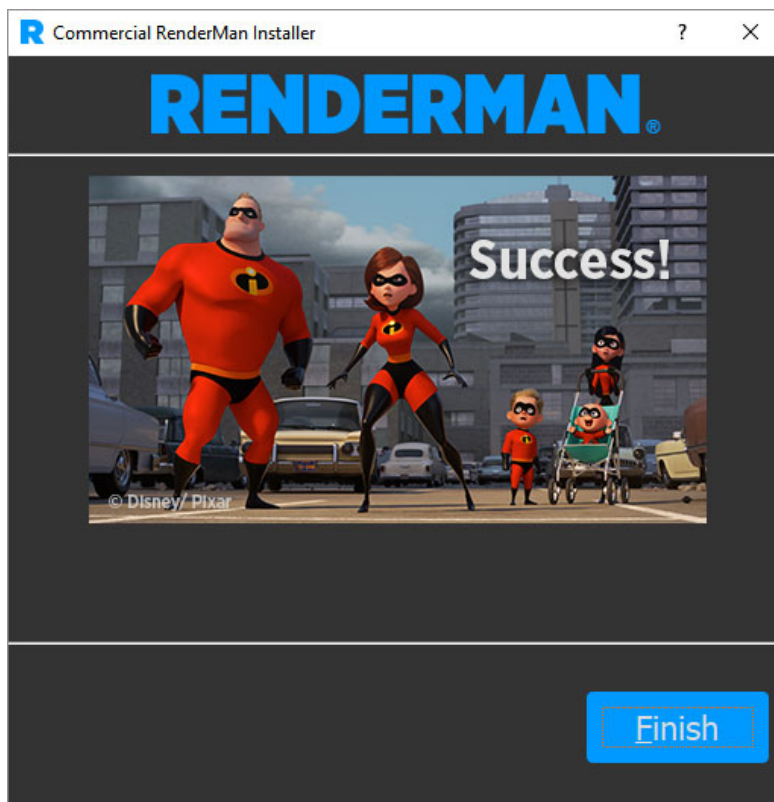
The installer will try to find the appropriate plugins to install as well. However if it cannot find a Maya installation or determines you have already installed the latest version of the software, you will give you a warning that something strange is afoot.

Here you can now decide which software and packages you wish to install. For instance if you do not wish to install the Katana plugins, you can deselect those. If you **WOULD** like to instal the license server for a floating license installation, you may select the "Show All" button and select the license server package as well. [Installing The License Server](#) talks in detail about the steps that must be taken on each platform once the installation finishes to ensure that the floating license server is functioning correctly.

Once the desired packages are selected, hitting the **Next** button goes to the download and installation phase.



Once this phase is complete a **Success!** screen should appear. At this point you can exit the installer.



When the installer is finished, the floating license service has **NOT BEEN INSTALLED** or **STARTED**.

[macOS License Server](#) goes over all the details for installing and starting the floating license services.

## Downloads

Other types of files besides RenderMan, the License Server and the DCC plugins can be downloaded with the installer as well. These include the RenderMan Examples. These will be placed in the user who ran the RenderManInstaller Download directory.

## Python

If you plan to take advantage of the Python binding you will need to download Python installer from [www.python.org](http://www.python.org). RenderMan Pro Server 24 binding is compatible with 2.7, and 3.7.

## Help

If you require further assistance, please check out the [RenderMan Support Forum](#). Note that registration is required.